

Me, Myself & I

Community friendship

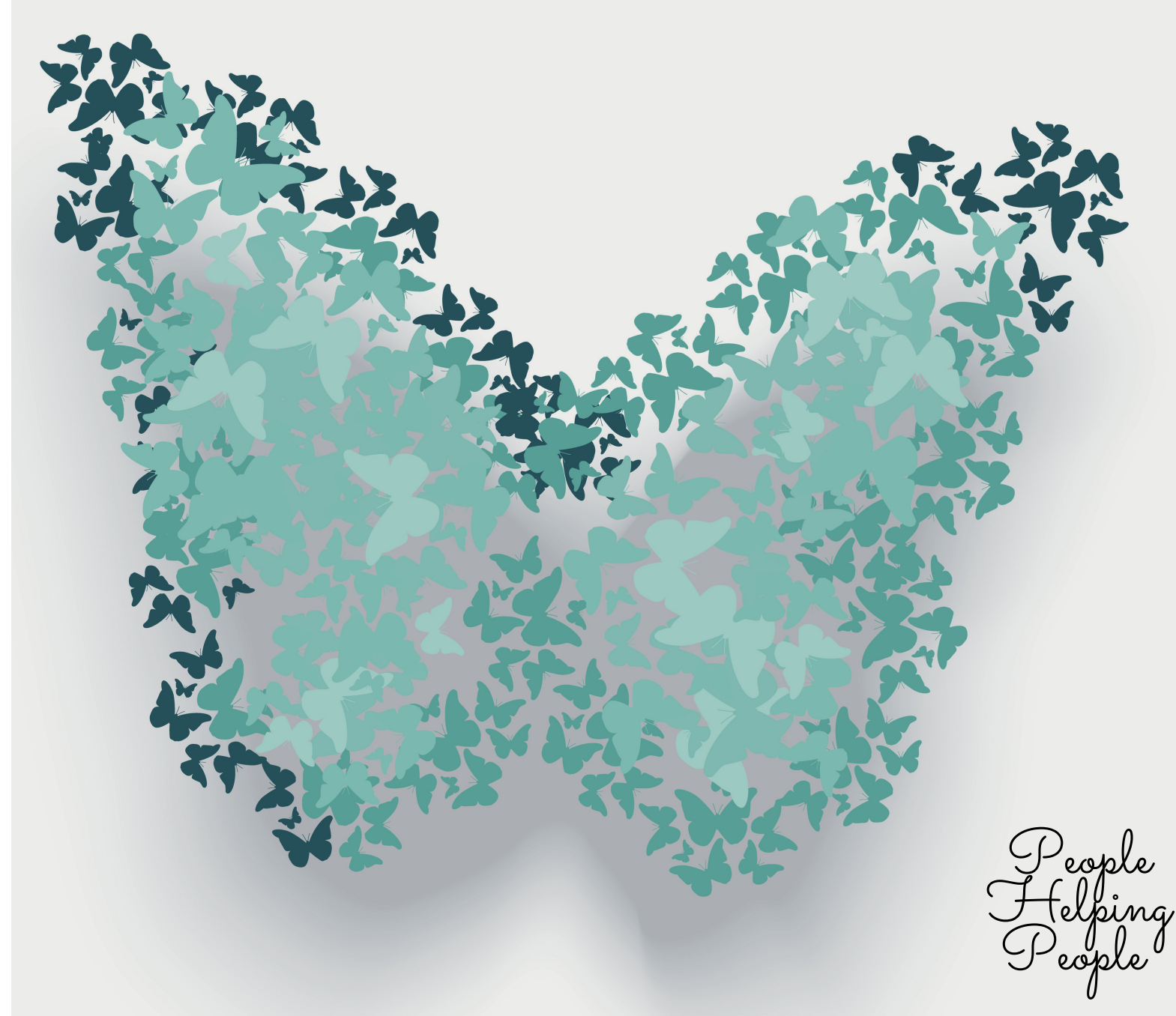
YOUR GUIDE TO GIFTS IN WILLS

HELPING OTHER FAMILIES TO ACCESS CARE & SUPPORT FROM YOUR GIFT..



**Thank you for
thinking about
leaving a gift in your
will to
*Me, Myself & I.***

**Your support will
help us to help others
living with Dementia**



Me, Myself & I was founded in July 2013 to support people living with dementia in the community. Through our personal life and work experiences we discovered that there was very little choice for the person living in their community with dementia. We wanted to create a place that was welcoming for all ages, where people could continue life long hobbies, meet new and old friends and feel at ease in a normalised setting.

Since the official opening of our services in 2014 we have moved premises three times in order to keep up with demand and increasing attendance.

We have seen first hand the profound effect that a dementia diagnosis can have on the person and their family and whereas we know we cant change that diagnosis we can support the person to live well with it.

Through our Friendship Afternoons and Day Break Opportunities we can offer a safe, warm and welcoming place for people to socialise and participate in community life.

We can also help care partners, families and friends with advice and guidance and through this support we can face dementia together.

**Thank you so much for considering
Me, Myself & I.**

'MMI a place
like home'



'Mum loved her mimi
friends, she had some
very special times
there'



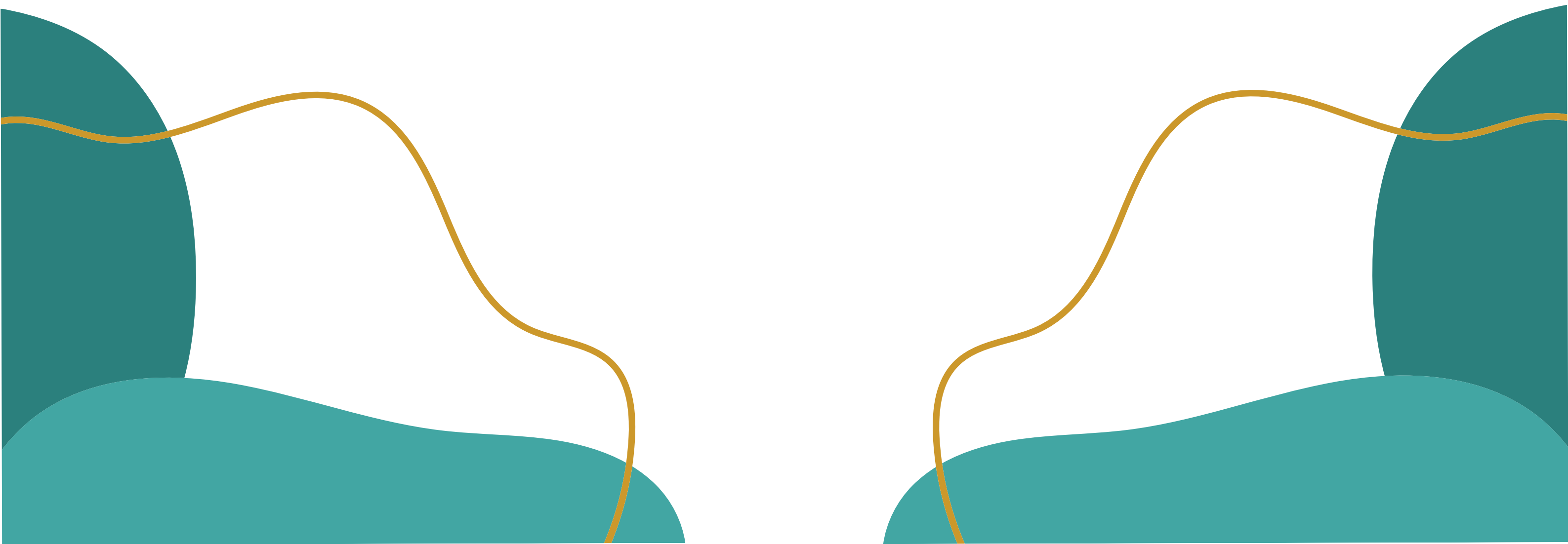
HOW A GIFT CAN HELP

Through your support we can continue to provide

- Day Break Opportunities
- Friendship Afternoons
- Care Partner, Family & Friend Support

and in doing so, help to reduce feelings of anxiety, isolation, loneliness and often despair at what the future holds.

It will help us to continue our support and provide a place where dementia is not the first thing that people see, where the person and their life story are most important and how we can support them to continue to live a happy and fulfilled life.



NEXT STEPS

If you have decided to leave a gift to Me, Myself & I then we would recommend that you make or change your will with the help of a solicitor or legal professional.

When you do this you will need to decide the type of gift you would like to give.

- Residuary Gift - percentage of the residue of your real and personal estate
- Pecuniary Gift - exact amount to be gifted

If you would like further information on how to proceed please let us know.



OUR PROMISE..

If you have made the decision to give a gift in your will to Me, Myself & I we want to assure you that we will make the most of your legacy gift and promise to:

Protect your privacy, your will is private and we will keep it that way. You dont have to tell us about your gift and we respect your decision either way.

You have the right to change your mind and we understand You dont need to tell us if you do.

We are committed to supporting people and their families living with dementia and by providing this support we hope to make a difference. to peoples lives.

We will strive to develop our services to help more people living with dementia

We will promote our ethos of People Helping People in all our work

We will use your gift carefully and cost effectively so that it has the greatest impact on families living with dementia

