

Me, Myself & I  
*Community friendship*

**COMMERCIAL BROCHURE 2025**



## ‘PEOPLE HELPING PEOPLE’

MMI NPT is a charity based in Briton Ferry to promote, preserve and protect the health and well-being of people of any age and ability, their carers and support networks through the provision of information, facilities, activities, and support services.

---

MMI's ethos of "People Helping People" is evident in our comprehensive services and community initiatives, making us a cornerstone of support for people living in Neath Port Talbot and surrounding areas.

Me, Myself & I (MMI) was established in 2013 to offer emotional support, reassurance, and opportunities for social interaction.

Our charity specialises in providing dementia day care services while creating socialisation opportunities for individuals throughout the community.







---

## WHY MMI?

Supporting Me, Myself & I Neath Port Talbot (MMI) is a meaningful investment in the community.

---

**Tackling Social Isolation:** MMI provides friendship groups, daybreak services, and social events to help individuals feel connected and supported.

**Mental Health & Dementia Support:** The charity offers safe spaces, workshops, and training programs to assist those facing dementia, mental health challenges, and emotional hardship.

**Community Engagement:** Sponsors can contribute to a cause that directly impacts local families, schools, and businesses through awareness programs and support networks.

**Positive Brand Association:** Aligning with MMI demonstrates corporate social responsibility and a commitment to improving lives in Neath Port Talbot.

**Sustainable Impact:** Donations and sponsorships help MMI continue providing essential services, ensuring long-term support for vulnerable individuals.

**Please browse this brochure, we would love you to help us continue making a difference within our community!**



# WORKING TOGETHER WORKS

Becoming our partner is a business agreement not a gift, one that should benefit your business, not just our charity.

---

- **Enhanced Community Presence:**

Partnering with MMI strengthens a business's local reputation and demonstrates a commitment to social responsibility.

- **Brand Recognition & Trust:**

Supporting a well-regarded charity fosters goodwill among customers, employees, and stakeholders.

- **Networking & Partnerships:**

Collaboration opens doors to new connections with other businesses, community leaders, and potential clients.

- **Employee Engagement & Morale:**

Involvement in charitable initiatives boosts employee satisfaction and fosters a positive workplace culture.

- **Marketing & Public Relations Opportunities:**

Sponsorships and partnerships can be promoted through events, social media, and press coverage, increasing visibility.

- **Access to Local Funding & Grants:**

Businesses working with community organisations may qualify for funding opportunities that support social initiatives.



Your brand will gain exposure from being partnered with MMI NPT.  
We work with several dedicated organisations.



Me, Myself & I  
*Community friendship*







# BECOME A PARTNER

How can becoming a partner benefit your business?

---

Partnering with Me Myself and I is more than just a commercial decision: it is a commitment to our community and growth. As Me Myself and I continue to develop and grow we are excited to offer a range of exclusive commercial sponsorship and partnership opportunities. Our values and commitment to our community presents a unique chance for businesses to partner with a dedicated charity, gaining extensive exposure and engaging with a passionate and growing organisation.

Explore the various sponsorship opportunities available and discover how partnering with us can elevate your brand and drive business growth.

**Thank you for considering this unique opportunity. We look forward to welcoming you to our MMI family.**



# EVENT SPONSORSHIP

Sponsor one of our dedicated annual events

---

From Easter and Christmas fayres to our Gala Dinner we have several unique events that can be sponsored to suit your needs

---

Package includes - Banner displayed at event, social media promotion, free tickets or stall.

**£300 PER EVENT**

**\*OPTION TO DONATE PRIZES FOR EVENT AUCTIONS AND RAFFLES**







## CAR PARK ADVERTISING

---

- 6ft x 4ft full colour design, print and fitting, displayed for full year within our facility at with hundreds of unique visitors per week.

### Car Park Boundary Wall

£400

## WEBSITE SPONSORSHIP

---

- Company Logo displayed on MMI Website
- Link to company website
- 1000's of visitors per year to website

### 1 year advert

£250



# DAYBREAK SPONSORSHIP

You can support our dedicated Daybreak service that offers respite to those living in need of support, their care partners and families. Your sponsorship would support the costs of the service including meals and much needed equipment.

## Annual Daybreak sponsorship

£1000

# DIGITAL ADVERTISING

You can advertise your business on our digital screens within the main hall where our Daybreak Service is held, the space is also used for all events and external bookings to guarantee maximum exposure during your sponsorship.

## Monthly Advert £25

## Annual Advert (12 months) £250







# ENTERTAINMENT SPONSOR

---

By becoming our main entertainment sponsor at MMI you would allow us to cover the annual costs for our guest's diverse entertainment we provide.

Our bookings include singers, choirs, physical activity sessions, animal therapy visits and guest speakers.

## **Annual Entertainment Sponsorship**

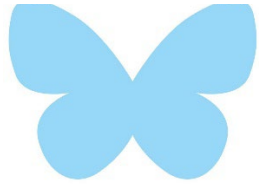
£1000

## **Single Sponsorship**

£150



# ‘BUTTERFLY EFFECT’ PACKAGE



Make a substantial difference to our charity by customising your own package from all we have to offer your business, one that will meet both our needs!

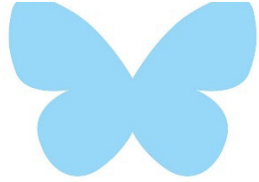
Choose a range of the above offers to suit your budget and we will work with you to ensure you receive the exposure and network opportunities you require.

**MEET US TO DISCUSS YOUR BUDGET AND NEEDS  
AND WE WILL MAKE IT WORK!**





# BECOME A TRUSTEE WITH MMI!



## Help Shape the Future of Me Myself and I in Neath Port Talbot

Are you passionate about your community? Want to support people living with dementia and their families?

Me, Myself & I (MMI) was established in 2013 to promote, preserve and protect the health and well-being of vulnerable people of any age and ability, their carers, and support networks through the provision of information, facilities, activities, and support services.

We focus primarily on Neath Port Talbot and the surrounding areas. We're looking for new trustees to join our board and help guide our work.

### What We're Looking For:

- ☒ A passion for helping others
- ☒ A few hours a month to commit (CAN BE VIRTUAL ONLY)
- ☒ A willingness to contribute ideas and experience
- ☒ Lived experience of dementia (personal or professional) is welcomed but not essential

### Skills That Would Be Helpful (but not essential):

- Health or social care background
- Fundraising or finance experience
- Legal, HR, or governance knowledge
- Community or charity sector involvement

### What You'll Gain:

- ✿ Make a real difference in people's lives
- ✿ Develop Director skills and experience for your CV
- ✿ Be part of a friendly, committed team

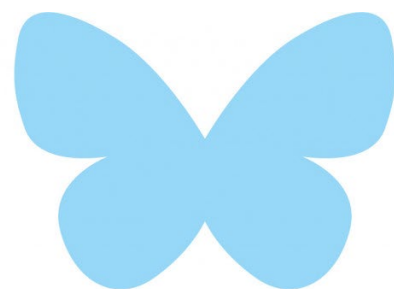
No previous trustee experience needed — just enthusiasm and commitment.

Interested? Want to know more?

Contact us for an informal chat: [info@mminpt.co.uk](mailto:info@mminpt.co.uk) or 01639 812528







# Me, Myself & I

*Community friendship*

**IF ANY OF OUR PACKAGES INTEREST YOU PLEASE CONTACT US**

[info@mminpt.co.uk](mailto:info@mminpt.co.uk)

**01639 812528**

**PROUD SPONSORS OF THE CARER OF THE YEAR AWARD 2025 #PRIDEOFWALESAWARDS**

